

Wyse R Class thin computers

Best Power, Expandability and Display Performance

WYSE
| | | |

for your data

your budgets

and your environment

Wyse R Class thin computers. All you need to know. Here



Introducing the Wyse R Class Thin Computers

The new Wyse R class thin computers cater for everything your users need from their desktop PCs. Without the things you don't. Like moving parts, wasted energy, insecure hard drives and excessive unnecessary heat.

Instead we've built in what matters the most to you: Powerful processors, dual monitor support, fast graphics and a host of USB ports for those vital everyday peripherals. Perfect when you need a client capable of voice, data, and video.



Wyse R00L

High Performance, slim form factor, Wyse WSM.



Wyse R50L

High Performance, slim form factor, SUSE Linux Enterprise.



Wyse R90L

High Performance, slim form factor, Microsoft Windows XP embedded.



Wyse R00LE

Highest Performance, comprehensive expansion options, Wyse WSM.



Wyse R50LE

Highest Performance, comprehensive expansion options, SUSE Linux Enterprise.



Wyse R90LE

Highest Performance, comprehensive expansion options, Microsoft Windows XP embedded.



Start

Models

Features

Technical

Print

WYSE
I I I I

Features

The new Wyse R Class Thin Computers

Created with power and performance in mind, the new Wyse R class joins the uniquely integrated range of Wyse Thin Computing hardware and software solutions.

The new Wyse R class features high performance central and graphics processors coupled with full support for multiple screens, and the best PC experience available on a thin computing platform with Wyse TCX Software.

Wyse Device Manager supports the Wyse R class with scalable enterprise-wide management including simple deployment, patching and updates and asset management - all with secure end-to-end encrypted communications.

Finally, each and every Wyse R class thin computer contributes – quietly and coolly – to lowering your organization’s carbon footprint, with power usage and emissions that are a fraction of traditional PC desktops.

Learn more. Simply click these Wyse R class feature icons:

Performance



L Family Connectivity



LE Family Connectivity



Mounting Options



Green



Provisioning Software



Management Software



Virtualization Software



Wyse Enhanced SUSE Linux



Microsoft Windows XP Embedded



Visit: wyse.com

Take a tour of the Wyse R class range features here



Start

Models

Features

Technical

Print

WYSE
I I I I

Performance

High Performing central and graphics processors

By employing the advanced ATI 690E chipset from AMD the Wyse RL/LE-family of thin computers provides the best graphics performance in their class. With a maximum resolution of up to 2560x1600 on a single display (RL-family) or two displays (RLE-family) these devices will support any high-end graphics application.

AMD Sempron Processor



The advanced technology contained in this CPU from AMD lowers power consumption without compromising superior performance.

- AMD64 Technology
- PowerNow! technology
- HyperTransport technology
- Built to support Microsoft® Windows® XPe, as well as Linux.

AMD ATI 690E Vista Premium ready



The most powerful and highly optimized graphics engine in its class.

- Multiple display support
- Built-in support for Full DirectX 9.0
- 3D Acceleration Features
- Support for OpenGL
- Motion Video Acceleration Features (MPEG-2, MPEG-4 and WMV9)

The Wyse RL/LE-family of thin computers is designed to support dual monitors with standard 1 DVI-I and 1 DVI-D ports. In addition, Wyse RL/LE family of thin computers includes support for Pixel Shader 2.0, and is Vista Ultimate with Premium Aero GUI compliant which will be a requirement for running some of the latest forthcoming technologies from Citrix, Microsoft and VMware.



[Continue tour](#)



Start

Models

Features

Technical

Print

WYSE
| | | |

R Class L-Family Connectivity

Wyse R00L, R50L & R90L thin computers



Well connected

Two Serial ports

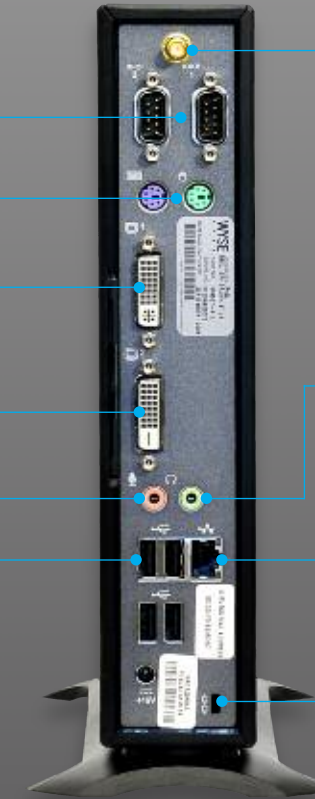
Two PS/2 ports

One DVI-I Port

One DVI-D Port

Audio In: 1/8-inch mini,
8 bit stereo microphone

Six External USB 2.0 ports
(2 front; 4 back)



Wi-Fi aerial
connector for
optional 802.11
b/g/n and
Bluetooth 2.0
connectivity

Audio Out: 1/8-
inch mini, 16 bit
stereo
Internal mono
speaker

10/100/1000
Base-T Gigabit
Ethernet port

Kensington Lock
Slot

Continue tour



Start

Models

Features

Technical

Print

WYSE
I I I I

R Class LE-Family Connectivity

Wyse R00LE, R50LE & R90LE thin computers



Well connected

One Parallel port
Two Serial ports

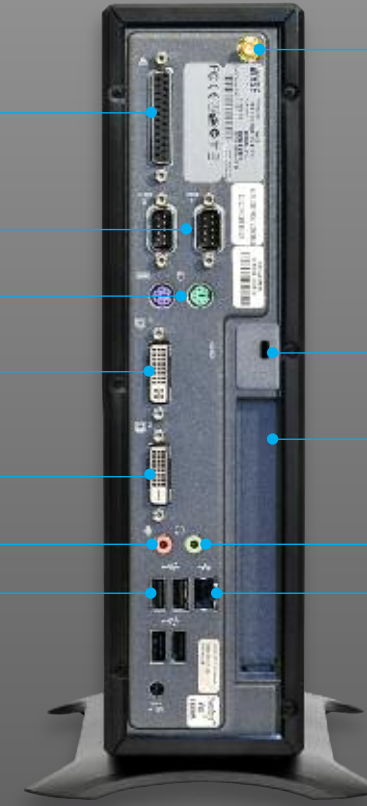
Two PS/2 ports

One DVI-I Port

One DVI-D Port

Audio In: 1/8-inch mini, 8 bit stereo microphone

Six External USB 2.0 ports
(2 front; 4 back)



Wi-Fi aerial connector for optional 802.11 b/g/n and Bluetooth 2.0 connectivity

Kensington Lock Slot

One PCIe 1.1a x4 with x16 slot

Audio Out: 1/8-inch mini, 16 bit stereo
Internal mono speaker

10/100/1000 Base-T
Gigabit Ethernet port

Continue tour



Start

Models

Features

Technical

Print

WYSE
| | | |

Mounting options

Vertical

- Wyse R class thin computers are supplied as standard with feet for vertical use.



Back of monitor or wall mounting

- An optional VESA mount bracket enables the Wyse R00L, R50L, and the R90L thin computers to be mounted on the back of a monitor (this requires the four industry standard mounting points to be free). The same bracket can be used for wall mounting, or in a secure or ruggedized cabinet if required.



Horizontal

- Optional feet enable Wyse R class thin computers to be used horizontally.

Continue tour



Start

Models

Features

Technical

Print

WYSE
| | | |

Desktop computing Without compromise

That's Wyse
EarthSmart Computing



EarthSmart Computing™



Going Green with Wyse Thin Computing

Through our EarthSmart Computing initiative we are committed to helping organizations implement a greener computing strategy - one that delivers a more efficient and productive computing experience for your users with a positive effect on energy wastage, heat and carbon emissions.

Green Power

Wyse R class thin computers use between 12 and 15 watts of power in typical use*. In comparison, a typical PC would use between 70 and 150 watts. Even in sleep mode Wyse R class units draw just 2 watts while being fully remotely managed. Then, when you include additional power requirements in the data center, a thin computing deployment will deliver power savings of between 50 and 90%.

*Average power usage with 1 device connected to 1 keyboard, 1 PS/2 mouse, and 1 monitor.

Continue tour



Start

Models

Features

Technical

Print

WYSE
| | | |

Provisioning Software

Wyse WSM

Wyse WSM Delivers full PC functionality with all the benefits of centralized management and maintenance-free 'Zero Clients'.

Wyse WSM provisions the operating system and applications on-demand to desktop devices across your network. Even traditional management tasks such as firmware upgrades, patching or installing new software applications are carried out one-time only centrally on the server, avoiding the need to visit individual desktops. Dramatically speeding-up and simplifying deployment in one stroke.

The power of a PC, without the complexity.

Wyse Zero Clients and Wyse WSM provide compact, energy efficient and productive desktops with all the dynamic user experience of a PC without the day-to-day complexities and risks associated with one.

Plus, as all Wyse Zero Clients have no moving parts to fail, their service lives (typically 5-10 years) are extended beyond those of comparable PCs, and the noise from fans and hard drives is eliminated. Better still, their low power consumption means low heat output enabling comfortable working environments with a reduced dependence on costly carbon-heavy air conditioning - often leaving workplace cooling achievable through natural ventilation.



Continue tour



Start

Models

Features

Technical

Print

WYSE
I I I I

Management Software

Wyse Device Manager

Thin computing remote management. Made easy

Wyse Device Manager (WDM) provides comprehensive, enterprise-wide management for Wyse R class thin computers. A licence for WDM Workgroup Edition is included with every R class thin computer. This may be upgraded to WDM Enterprise Edition for an additional charge. **Key features include:**

Security

- HTTPS Based Imaging / Updates
- Fully Encrypted Network Traffic
- Multi-user Admin Access (MS AD) Support

No-Hassle Deployment

- Complete Device Imaging / Patching / Updates
- Bandwidth Throttling for Efficiency / Reliability
- Software Updates and Add-ons

Device Administration and Monitoring

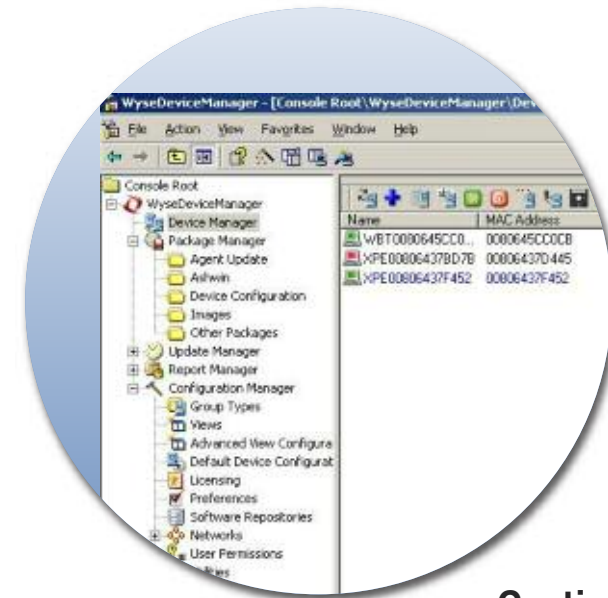
- Device Health Status / Reporting
- Remote Shadowing / Control
- Default Device Configuration

Scalability

- Distributed Architecture
- SQL / MSDE Support
- Multiple Remote Repository Support

Complete Asset Visibility

- Automated Discovery
- Detailed Hardware Asset information
- Installed Software Asset information.



Continue tour



Start

Models

Features

Technical

Print

WYSE
I I I I

Virtualization Software

Wyse TCX™ Software Suite with Collaborative Processing Architecture™

Wyse TCX Software Suite delivers an amazing user experience.

Wyse TCX is our new software suite which enriches the user experience by removing the limitations previously associated with thin clients. With Wyse TCX users receive the best PC experience available on a thin computing platform. Wyse TCX software is sold separately.



Wyse TCX Multi-display

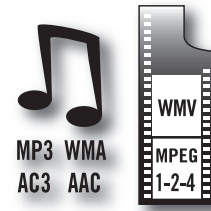
Ensures application windows and dialog boxes are multi-monitor aware when using more than one monitor.



Wyse TCX USB Virtualizer

Enables plug and play peripheral support for virtual desktop environments.

- Redirect and use local USB devices in virtual desktops.
- Deploy virtual desktops to knowledge workers with special device access needs.
- Enable a broad set of USB peripherals including webcams and headsets.



Wyse TCX Multimedia

Streamlines the delivery of the multimedia stream to the local client for a rich user experience within a thin computing architecture.

- Accelerates Mpeg1, Mpeg2, WMV, Mpeg4 Part 2, AC3, AAC, MP3, WAV, WMA media types.
- Collaborative Processing Architecture enhances server scalability by off-loading multimedia rendering to the client.



Wyse TCX Rich Sound

Enables bi-directional audio in virtual desktop environments, enabling solutions such as VOIP, digital dictation or voice recognition to be deployed.

[Continue tour](#)



Start

Models

Features

Technical

Print

WYSE
I I I I

Operating Systems Wyse Enhanced SUSE Linux Enterprise

Wyse Enhanced SUSE Linux Enterprise is the industry's only enterprise-quality Linux operating system, created by combining the secure, flexible and market-leading usability of Novell's SUSE Linux Enterprise with Wyse thin computing's leadership and innovation in user experience and management.



The only enterprise-quality Linux
...that's optimized for thin computing



Management

- Deploying Wyse Enhanced SUSE Linux Enterprise is easier than any other thin-Linux distribution. Utilizing Wyse's proven auto-configuration and update approach - management tasks can be managed centrally without additional management software. All that's required is an FTP server and a single text-based configuration file. Wyse Device Manager is also supported for more hands-on management.
- With Wyse Enhanced SUSE Linux Enterprise, IT managers can lock down applications, disable unnecessary configuration options, and provide read-only access capabilities to minimize data loss in case of theft, corruption, or virus attacks.

Flexible. Safe. Assured

- Wyse Enhanced SUSE Linux Enterprise provides a logical next step for Wyse Thin OS users requiring a flexible, secure and adaptable operating system.
- Enterprise-grade security is upheld by Wyse Enhanced SUSE Linux Enterprise's read-only file system.
- Wyse Enhanced SUSE Linux Enterprise is the 'Safe Linux' indemnified jointly by Novell and Microsoft.

Continue tour



Start

Models

Features

Technical

Print

WYSE
| | | |

Operating Systems

Microsoft Windows XPe

Running Microsoft Windows XPe on Wyse thin computers gives IT departments the ability to deploy fully functional desktop computers with better manageability and significantly lower total cost of ownership than personal computers.



Wyse Microsoft Windows XPe-based thin computers can run 32 bit Microsoft Windows applications, either locally or from servers located on the network, with inbuilt flexibility to add and support a host of desktop peripherals with permission from the IT administrator.

Secure write-protected thin desktops

This robust and flexible operating system is further enhanced by the Wyse file-based Write Filter that enables you to protect the file system image from accidental changes or user customization. On rebooting, the thin client simply returns to the required file system image state.

Wyse customized image support

Wyse technicians are able to help you customize Windows XPe to your exact requirements and create bespoke system images for subsequent enterprise-wide deployment, management and update through Wyse Device Manager.

Contact your Wyse Partner for further details

Take the tour again



Start

Models

Features

Technical

Print

WYSE
I I I I

Contact Wyse

Wyse Technology Inc.

3471 North First Street, San Jose, CA 95134-1801

Visit our website at:

<http://www.wyse.com> or send an email to: sales@wyse.com

Wyse Sales

800 GET WYSE (800 438 9973)

Wyse Customer Service Center:

800 800 WYSE (800 800 9973)

Wyse offers thin computing sales, service and support expertise around the globe.

[Click here for contact details of your regional Wyse office.](#)

©2009 The Wyse logo and Wyse are trademarks of Wyse Technology Inc. Other product names mentioned herein are for identification purposes only and may be trademarks and/or registered trademarks of their respective companies. All specifications are subject to change without notice. Whilst we make every effort to ensure the accuracy of the details, specifications, models, images and benefits featured in this datasheet, we cannot be held responsible for any errors and/or omissions. If you have any queries regarding Wyse products please contact your authorized regional Wyse Partner or representative for further information and assistance. Some features require support by server operating system and protocol. 04/09



Start

Models

Features

Technical

Print

WYSE
I I I I

Wyse R Class L-Family Specifications: R00L, R50L & R90L thin computers

Hardware specifications

Processor	1GHz AMD Sempron Processor	Display	VESA monitor support with Display Data Control (DDC) for automatic setting of resolution and refresh rate Dual monitor supported Single: 2560X1600 32 bpp 60Hz Dual: 2560X1600 16 bpp 60Hz Dual: 1920X1200 32 bpp 60Hz
Memory	Standard 1GB RAM / 1GB Flash Maximum 2GB RAM / 4GB Flash	Audio	Out: 1/8-inch mini, 16 bit stereo. Internal Mono speaker. In: 1/8-inch mini, 8 bit stereo microphone.
I/O peripheral support	One DVI-I Port One DVI-D Port Two PS/2 ports Two serial ports Six External USB 2.0 ports (2 front; 4 back) One Mic In One Line Out	Power	Worldwide auto-sensing 100-240 VAC, 50/60 Hz 65W, 19V DC
Included	Optical mouse and PS/2 keyboard	Power consumption	Average 12.7 W
Graphics	AMD ATI 690E Microsoft Windows Vista Premium ready	Mountings	Vertical or Horizontal (optional), VESA mount.
Networking/Comm	10/100/1000 Base-T Gigabit Ethernet 802.11 b/g/n and Bluetooth 2.0 (optional)	Security	Kensington Lock Slot
		Dimensions	250mm x 225mm x 53mm (9.8 in. x 8.8 in. x 2.1 in.)
		Temperature Range	Horizontal position: 50 to 95 F (10 to 35 C) Vertical position: 50 to 104 F (10 to 40 C)
		Humidity	20% to 80%
		Hardware Warranty	3 years limited hardware warranty



Start

Models

Features

Technical

Print

WYSE
| | | |

Wyse R Class LE-Family Specifications: R00LE, 50LE & R90LE thin computers

Hardware specifications

Processor	1.5 GHz AMD Sempron Processor	Display	VESA monitor support with Display Data Control (DDC) for automatic setting of resolution and refresh rate Dual monitor supported
Memory	Standard 1GB RAM / 1GB Flash Maximum 2GB RAM / 4GB Flash	Audio	Out: 1/8-inch mini, 16 bit stereo. Internal Mono speaker In: 1/8-inch mini, 8 bit stereo microphone
I/O peripheral support	One DVI-I Port One DVI-D Port Two PS/2 ports Two serial ports Six External USB 2.0 ports (2 front; 4 back) Four Internal USB 2.0 ports One Mic In One Line Out One Parallel port	Power	Worldwide auto-sensing 100-240 VAC, 50/60 Hz 65W, 19V DC
Expansion	One PCIe 1.1a x4 with x16 slot, half card length, full height	Power consumption	Average: 14.1 W
Included	Optical mouse and PS/2 keyboard	Mountings	Vertical or Horizontal (optional), VESA mount
Graphics	AMD ATI 690E Microsoft Windows Vista Premium ready	Security	Kensington Lock Slot
Networking/Comm	10/100/1000 Base-T Gigabit Ethernet 802.11 b/g/n and Bluetooth 2.0 (optional)	Dimensions	307mm x 225mm x 82mm (12.1 in. x 8.8 in. x 3.2 in.)
		Temperature Range	Horizontal position: 50 to 95 F (10 to 35 C) Vertical position: 50 to 104 F (10 to 40 C)
		Humidity	20% to 80%
		Hardware Warranty	3 years limited hardware warranty



Start

Models

Features

Technical

Print

WYSE
I I I I

Wyse Enhanced SUSE Linux Enterprise

Software specifications

Firmware features

SUSE Linux Enterprise 10 SP2 with Kernel 2.6
Compatible with SLED 10 SP2 Add-ons
Automatic Central Configuration (text-based INI files)
Automatic Upgrades (FTP, HTTP, HTTPS)
CUPS, LPR/LPD, Ghostscript and Samba print support
Firefox browser standard
ThinPrint Support(Add-on)
Citrix ICA 10.32 client
RDESKTOP 1.6 client
XDMCP
SSH Support
Flash Player
JAVA support
Ericom PowerTerm® Terminal Emulation
Cisco, Juniper, Nortel, IPSEC VPN Support (Add-ons)

Server OS Compatibility/Support Citrix XenDesktop

Citrix XenApp (formerly Citrix Presentation Server)
VMware View
UNIX/Linux servers
Windows Server 2000
Windows Server 2003

Keyboard / language support

100+ Keyboard Layouts supported locally
(English, German, Spanish, French, Italian, Dutch, Chinese, Japanese, Turkish)
Language: English (Default), add-ons available for other languages
(English, German, Spanish, French, Italian, Dutch, Chinese, Japanese, Turkish)

Security

Compressed read-only file system
Wireless 802.1x security support
Ability to lock down terminal and access to specific applications per user

Management

Automatic configuration and upgrading without need for
Device Management software
Also, integration with Wyse Device Manager (WDM) if hands-on management and
asset-tracking is desired:
- Complete image upgrade
- Wake terminal remotely (Wake-on LAN)
- Terminal configuration (IP information, name, etc.)
- Remote screen shadowing of entire desktop (VNC)
- Asset management and Reporting

Wireless support

WEP, WPA Personal, WPA2 Personal, WPA Enterprise, WPA2 Enterprise
Authentication support
PEAP: PAP/MSCHAP/MSCHAPV2 support
TLS: PAP/MSCHAP/MSCHAPV2/GTC support



Start

Models

Features

Technical

Print

WYSE
I T T I

Microsoft Windows XPe Software specifications

Firmware features

Microsoft Windows XPe
Microsoft Internet Explorer 6.0 resident: HTML, JavaScript, XML,
Active X Sun JRE, Media Player, Citrix Web Interface
RDP 6.0 resident
Citrix ICA 10.250 resident
Terminal Services Advanced Client (TSAC)
Ericom PowerTerm[®] Terminal Emulation
provides 30-plus terminal emulations
Citrix XenDesktop

Server OS

Citrix XenApp / Citrix Presentation Server

Infrastructure Support

Citrix XenDesktop
VMware View
Microsoft Windows Terminal Server 2003 & 2008

Set-up and Configuration

Boot from local flash
Microsoft Windows XP user interface languages: U.S. English,
French, German, Spanish, Optional add-ons

Keyboard language support

U.S. English (standard), French, German, Spanish, U.K. English,
40 other languages included

Protocol Support

TCP/IP, DNS, DHCP, PXE

Management

Remote management, configuration, and upgrades
through Wyse Device Manager
Complete image upgrade
Wake terminal remotely (Wake-on LAN)
Terminal configuration (IP information, name, etc.)
Remote screen shadowing of entire desktop
(Wyse Remote Shadow)
Reporting, Asset management
SMS
Altiris
CA Unicenter NSM (requires Wyse Device Manager
Enterprise Edition)
IBM Tivoli NetView (requires Wyse Device Manager
Enterprise Edition)

Wireless support

802.11 b/g support with external wireless adapter or
internal wireless adapter option
WPA-2, WEP, WPA wireless authentication
PEAP-GTC wireless authentication protocol with optional
Juniper Odyssey Client
Supports PC-Card wireless adapters from: Cisco, D-Link, Netgear,
US Robotics, Trendware

Plug-ins

Adobe Flash Player
Adobe Shockwave



Start

Models

Features

Technical

Print

WYSE
I I I I

WYSE

Wyse R Class thin computers

Best Power, Expandability and Display Performance

Summary Data



Wyse R class L

Wyse R class LE

Wyse R class thin computers

Everything you need in a thin computer.

The Wyse R class family of thin computers combines power, expandability and display performance with the legendary security, reliability and manageability of Wyse Thin Computing. Designed to maximize your investment in thin, virtualized or zero client environments the Wyse R class family presents a compelling solution to delivering low cost, low carbon, high-performance desktops.

The Wyse R class features powerful processors, dual monitor support, fast graphics and a host of USB ports for those vital everyday peripherals. Perfect when you need a client capable of voice, data, and video.

High performance central and graphics processors.

The new Wyse R class features high performance central and graphics processors coupled with full support for multiple screens, and the best PC experience available on a thin computing platform with Wyse TCX Software.

Mounting options.

Wyse R class thin computers are supplied as standard with feet for vertical use. Optional feet enable Wyse R class thin computers to be used horizontally. An optional VESA mount bracket enables the Wyse R00L, R50L, and the R90L thin computers to be mounted on the back of a monitor (this requires the four industry standard mounting points to be free). The same bracket can be used for wall mounting, or in a secure or ruggedized cabinet if required.

Choice of operating systems.

The Wyse R class is available with Windows XPe and Wyse Enhanced SUSE Linux operating systems as well as in a Wyse WSM configured zero client format.

Features

Performance

Advanced new generation ATI 690E graphics and AMD Sempron central processors for class-leading computing and graphics performance.

Connectivity

Featuring future proof connectivity with two DVI outputs and fast 802.11n WiFi.

Mounting options

The Wyse R class family can be sited vertically or horizontally on desktops, and even fitted to walls and behind monitors

Green

Wyse R class thin computers use between 12 and 15 watts of power in typical use – less than its nearest rival, saving critical carbon output and vital budget.

OS and Application Provisioning

Full integration with Wyse WSM provisioning software with the Wyse R00L and R00LE.

Wyse Enhanced SUSE Linux

Secure, flexible and market-leading Linux combined with Wyse optimizations in management and user experience.

Microsoft Windows XPe

This robust and flexible operating system is further enhanced by the Wyse file-based Write Filter that enables you to protect the file system image from accidental changes or user customization.

Wyse R class thin computers Hardware specifications

Wyse R class L family

Processor	1GHz AMD Sempron Processor
Memory	Standard 1GB Flash / 1GB RAM Maximum 4GB Flash / 2GB RAM
I/O peripheral support	One DVI-I Port One DVI-D Port Two PS/2 ports Two serial ports Six External USB 2.0 ports (2 front; 4 back) Four Internal USB 2.0 ports One Mic In One Line Out Enhanced PS/2 Keyboard with PS/2 with Windows Keys (104 keys) PS/2 Optical Mouse included
Graphics	AMD ATI 690E Microsoft Windows Vista Premium ready
Networking/Comm	10/100/1000 Base-T Gigabit Ethernet 802.11 b/g/n and Bluetooth 2.0 (optional)
Display	VESA monitor support with Display Data Control (DDC) for automatic setting of resolution and refresh rate Dual monitor supported Single: 2560X1600 32 bpp 60Hz Dual: 2560X1600 16 bpp 60Hz Dual: 1920X1200 32 bpp 60Hz
Audio	Out: 1/8-inch mini, 16 bit stereo. Internal Mono speaker. In: 1/8-inch mini, 8 bit stereo microphone.
Power	Worldwide auto-sensing 100-240 VAC, 50/60 Hz 65W, 19V DC
Power consumption	Average 12.7 W
Mountings	Vertical or Horizontal (optional), VESA mount (optional)
Security	Kensington Lock Slot
Dimensions	250mm x 225mm x 53mm (9.8 in. x 8.8 in. x 2.1 in.)
Temperature Range	Horizontal position: 50 to 95 F (10 to 35 C) Vertical position: 50 to 104 F (10 to 40 C)
Humidity	20% to 80%
Hardware Warranty	3 years limited hardware warranty

Wyse R class LE family

Processor	1.5 GHz AMD Sempron Processor
Memory	Standard 1GB Flash / 1GB RAM Maximum 4GB Flash / 2GB RAM
I/O peripheral support	One DVI-I Port One DVI-D Port Two PS/2 ports Two serial ports Six External USB 2.0 ports (2 front; 4 back) Four Internal USB 2.0 ports One Mic In One Line Out One Parallel port Enhanced PS/2 Keyboard with PS/2 with Windows Keys (104 keys) PS/2 Optical Mouse included
Expansion	One PCIe 1.1a x4 with x16 slot, half card length, full height
Graphics	AMD ATI 690E Microsoft Windows Vista Premium ready
Networking/Comm	10/100/1000 Base-T Gigabit Ethernet 802.11 b/g/n and Bluetooth 2.0 (optional)
Display	VESA monitor support with Display Data Control (DDC) for automatic setting of resolution and refresh rate Dual monitor supported Single: 2560X1600 32 bpp 60Hz Dual: 2560X1600 32 bpp 60Hz
Audio	Out: 1/8-inch mini, 16 bit stereo. Internal Mono speaker In: 1/8-inch mini, 8 bit stereo microphone
Power	Worldwide auto-sensing 100-240 VAC, 50/60 Hz 65W, 19V DC
Power consumption	Average: 14.1 W
Mountings	Vertical or Horizontal (optional), Wall mount (optional)
Security	Kensington Lock Slot
Dimensions	307mm x 225mm x 82mm (12.1 in. x 8.8 in. x 3.2 in.)
Temperature Range	Horizontal position: 50 to 95 F (10 to 35 C) Vertical position: 50 to 104 F (10 to 40 C)
Humidity	20% to 80%
Hardware Warranty	3 years limited hardware warranty

Wyse Technology Inc.
3471 North First Street
San Jose, CA 95134-1801

Visit our website at:
<http://www.wyse.com>
Or send email to:
sales@wyse.com

Wyse Sales
800 GET WYSE
(800 438 9973)

Wyse Customer Service Center:
800 800 WYSE
(800 800 9973)

WYSE
| | | |