

# Wyse S Class thin computers

WYSE

Even smaller  
footprint here.

Small  
footprint  
here.

Wyse S Class thin computers. All you need to know. Here



# Introducing the Wyse S Class thin computers

With its compact size and availability across a range of operating systems the Wyse S class presents a compelling solution to deploying fast, task-oriented desktops right across your organization.

The S class range features four operating system models:



## Wyse S10

Featuring the blisteringly fast Wyse Thin OS designed for task-oriented environments



## Wyse S30

Windows CE for web browser functionality and terminal emulation for connecting to legacy systems.



## Wyse S50

Complete with the latest Wyse Linux v6 operating system for fast web browsing, X-based sessions and simple environments



## Wyse S90

All the benefits of a Microsoft Windows XP desktop with fast secure access.



Start

Models

Features

Technical

Print

WYSE  
| | | |

# Features

## Wyse S Class thin computers

Wyse S class thin computers are big on features and benefits, without taking over your users' valuable desktop space and environment.

Their sleek compact size fits in the palm of your hand and features four USB ports, one serial and one LAN port. The Wyse S class' unique monorail mounting feature lets you choose to site them horizontally or vertically on top of or under desks, fitted to the rear of monitors and even to walls!

Each Wyse S class thin client benefits from the powerful Wyse software range that includes dynamic management and user-enhancement applications designed to deliver the best user experience over virtualized desktop environments.

Small on size also means small on energy consumption, as each Wyse S class draws just 6.6 watts of power and creates very little heat. As a result each Wyse S class contributes to cooler working environments, greatly reduced carbon footprints and huge savings in energy costs when compared to equivalent PC desktops.

**Learn more.** Simply click these Wyse S class feature icons:

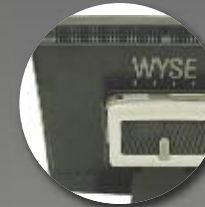
Performance



S class Connectivity



Mounting Options



Green



Management Software



Virtualization Software



Wyse Thin OS



Wyse Linux v6



Microsoft Windows CE



Microsoft Windows XP Embedded



Visit: [wyse.com](http://wyse.com)

Take a tour of the Wyse S class range features here



Start

Models

Features

Technical

Print

**WYSE**  
I I I I

# Performance

## Small size. Fast mover.

Wyse S class thin clients present a host of high performance features designed to deliver the most productive task-oriented desktops.

Powered by their AMD Geode GX 366 MHZ processors these stateless devices boot-up in seconds and provide secure user login to corporate networks.

Wyse S class thin clients are optimized for Microsoft Terminal Server, Citrix XenApp, Citrix XenDesktop, and VMware View environments, with functionality further boosted by the Wyse TCX software suite of rich user enhancements.

**That's the S Wyse class. Created to combine fast, secure network access within virtualized application and desktop environments.**

AMD Geode GX 366 MHZ



Continue tour



Start

Models

Features

Technical

Print

WYSE  
| | | |

# S Class Family Connectivity

Wyse S10, S30, S50 and S90 thin clients

## Well connected



One Serial port

One VGA-type video output

Kensington Lock Slot

10/100 Base-T Ethernet port

Four external USB 2.0 ports  
(2 front; 2 back)

Audio Out: 1/8-inch mini jack, 16 bit stereo

Audio In: 1/8-inch mini jack,  
8 bit stereo microphone

Continue tour



Start

Models

Features

Technical

Print

**WYSE**  
I I I I

# Mounting options

## Horizontal

- Wyse S class thin computers are supplied as standard with feet for horizontal use.



## Back of monitor or wall mounting

- An optional VESA mount bracket enables Wyse S class thin computers to be mounted on the back of a monitor (this requires the four industry standard mounting points to be free). The same bracket can be used for wall mounting, or in a secure or ruggedized cabinet if required.



## Vertical

- Optional feet enable Wyse S class thin computers to be used vertically.



Continue tour



Start

Models

Features

Technical

Print

WYSE  
| | | |

# Desktop computing Without compromise

That's Wyse  
EarthSmart Computing



EarthSmart Computing™



## Going Green with Wyse Thin Computing

Through our EarthSmart Computing initiative we are committed to helping organizations implement a greener computing strategy - one that delivers a more efficient and productive computing experience for your users with a positive effect on energy wastage, heat and carbon emissions.

### Green Power

Each Wyse S class draws just 6.6 watts\* of power and creates very little heat as a result - contributing to cooler user work environments, a greatly reduced carbon footprint and huge savings in energy costs when compared to equivalent PC desktops.

\*Average power usage with device connected to 1 keyboard, 1 PS/2 mouse, and 1 monitor.

Continue tour



Start

Models

Features

Technical

Print

WYSE  
| | | |

# Management Software

## Wyse Device Manager

### Thin computing remote management. Made easy.

Wyse Device Manager (WDM) provides comprehensive, enterprise-wide management for Wyse S class thin clients. A licence for WDM Workgroup Edition is included with every Wyse S class thin computer. This may be upgraded to WDM Enterprise Edition for an additional charge. **Key features include:**

#### Security

- HTTPS Based Imaging / Updates
- Fully Encrypted Network Traffic
- Multi-user Admin Access (MS AD) Support

#### No-Hassle Deployment

- Complete Device Imaging / Patching / Updates
- Bandwidth Throttling for Efficiency / Reliability
- Software Updates and Add-ons

#### Device Administration and Monitoring

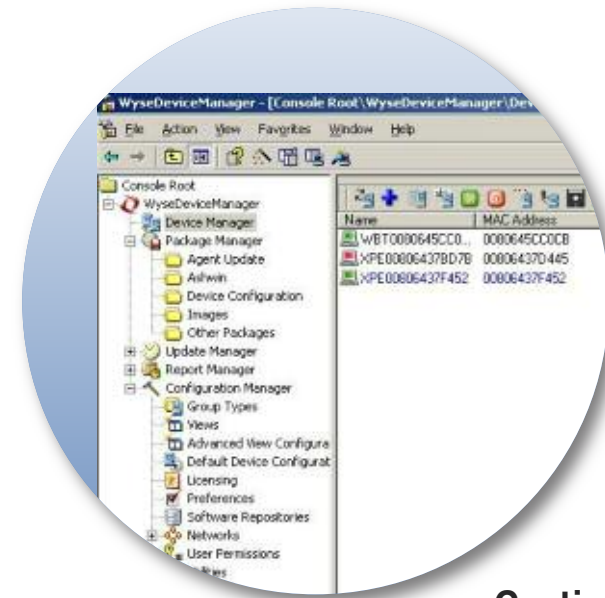
- Device Health Status / Reporting
- Remote Shadowing / Control
- Default Device Configuration

#### Scalability

- Distributed Architecture
- SQL / MSDE Support
- Multiple Remote Repository Support

#### Complete Asset Visibility

- Automated Discovery
- Detailed Hardware Asset information
- Installed Software Asset information.



Continue tour



Start

Models

Features

Technical

Print

WYSE  
I I I I

# Virtualization Software

## Wyse TCX™ Software

### Wyse TCX Software Suite delivers an amazing user experience.

Wyse TCX is our new software suite that enriches the user experience by removing the limitations previously associated with thin client environments.

Wyse TCX software is sold separately.

### Wyse TCX USB Virtualizer

Enables plug and play peripheral support for virtual desktop environments.

- Redirect and use local USB devices in virtual desktops.
- Deploy virtual desktops to knowledge workers with special device access needs.
- Enable a broad set of USB peripherals including webcams and headsets.



Continue tour



Start

Models

Features

Technical

Print

WYSE  
| | | |

# Operating Systems

## Wyse Thin OS

**Wyse Thin OS is the most optimized, management-free solution for Citrix XenApp, Citrix XenDesktop, Microsoft Terminal Server and VMware View virtual desktop environments.**

Wyse Thin OS ensures every Wyse thin client provides flexible and secure user access as it's the only thin computing operating system to feature an unpublished API delivering built-in protection from the viruses, malicious software and trojans developed by hackers.

This fast, purpose-built thin computing operating system boots-up in seconds, updates itself automatically, and delivers IT managers with simple, scalable administration to suit their organization's needs. Wyse Thin OS makes time consuming maintenance tasks such as software and firmware updates as easy as dragging and dropping them onto a central FTP site.

Image management is automated via DHCP and FTP, while Wyse Device Manager handles additional enterprise-wide remote device management.

*Choose Wyse Thin OS for simple, scalable administration of Wyse S class thin clients to suit your organization's needs*



**Wyse Thin OS delivers a wealth of innovative, user-oriented and productive features:**

### Easy management

- Wyse Thin OS enables simple, scalable device management from day one.
- Its easy FTP-based configuration and automatic update facility allows for time-saving hands-off device management.
- In fact it's so easy, many IT managers find they needn't use a dedicated management tool, as everything they need is catered for with Wyse Thin OS.

### Fast boot-up

- Wyse Thin OS users and managers alike benefit from the class-leading fast boot-up times.

### Security

- Featuring an unpublished API and no file system Wyse Thin OS is inherently secure providing maximum security from malware and viruses.

### Smart card support

- Wyse Thin OS gives organizations the levels of secure access they need. Wyse Thin OS supports seamless smart-card roaming between devices (when supported by the server environment).

Continue tour



Start

Models

Features

Technical

Print

**WYSE**  
I T I

# Operating Systems

## Wyse Linux v6

**Wyse Linux v6 is a powerful Linux-based operating system optimized for thin computing. It is ideal for organizations who want to run server-based Microsoft Windows applications, local Linux applications or distributed X Window applications.**



Wyse Linux is a powerful Linux-based operating system optimized for Wyse thin computing.



Wyse Linux v6 comes with the Firefox web browser to give you a secure internet experience. Plus it offers terminal emulation to give you the ability to run legacy applications.

### **Secure, flexible access**

Wyse Linux's hot-desking capabilities allow people to log in to different thin computers without losing their desktop configuration. Wyse Linux is modular too, allowing you to add-on or remove features as necessary to improve your performance and cost advantages. It also offers a secure read-only file system that provides the highest protection against software corruption and virus attacks. In addition the file system is compressed to maximize space for additional software applications.

### **Improved wireless and smart card authentication and support**

New with Wyse Linux v6 is improved wireless support (including 802.11 g/b) and authentication, better smart card support and authentication and enhanced localization with doublebyte Asian language support.

**Continue tour**



**Start**

**Models**

**Features**

**Technical**

**Print**

**WYSE**  
| | | |

# Operating Systems

## Microsoft Windows CE

Wyse-enhanced Microsoft Windows CE is ideal for departments and organizations that need support for Citrix ICA and Microsoft RDP as well as a local browser and terminal emulation, plus standard connections to peripherals and add-ons.



Microsoft Windows CE gives you a PC-like experience on the desktop, with local terminal emulation so you can run most legacy applications. By combining this small and fast operating system with firmware components, Wyse is able to reduce boot times and increase protection against viruses, trojan horses, and other malware.

The result is a simply more secure solution that provides the flexibility to add standard peripherals, from printers to scanners to USB thumb drives. However these peripherals can only be connected under access controlled by the IT administrator.

Continue tour



Start

Models

Features

Technical

Print

WYSE  
I I I I

# Operating Systems

## Microsoft Windows XPe

Running Microsoft Windows XPe on Wyse thin computers gives IT departments the ability to deploy fully functional desktop computers with better manageability and significantly lower total cost of ownership than personal computers.



Wyse Microsoft Windows XPe-based thin computers can run 32 bit Microsoft Windows applications, either locally or from servers located on the network, with inbuilt flexibility to add and support a host of desktop peripherals with permission from the IT administrator.

### Secure write-protected thin desktops

This robust and flexible operating system is further enhanced by the Wyse file-based Write Filter that enables you to protect the file system image from accidental changes or user customization. On rebooting, the thin client simply returns to the required file system image state.

### Wyse customized image support

Wyse technicians are able to help you customize Windows XPe to your exact requirements and create bespoke system images for subsequent enterprise-wide deployment, management and update through Wyse Device Manager.

Contact your Wyse Partner for further details

Take the tour again



Start

Models

Features

Technical

Print

**WYSE**  
I T I

# Contact Wyse

---

## Wyse Technology Inc.

3471 North First Street, San Jose, CA 95134-1801

## Visit our website at:

<http://www.wyse.com> or send an email to: [sales@wyse.com](mailto:sales@wyse.com)

## Wyse Sales

800 GET WYSE (800 438 9973)

## Wyse Customer Service Center:

800 800 WYSE (800 800 9973)

**Wyse offers thin computing sales, service and support expertise around the globe.**

[Click here for contact details of your regional Wyse office.](#)

©2009 The Wyse logo and Wyse are trademarks of Wyse Technology Inc. Other product names mentioned herein are for identification purposes only and may be trademarks and/or registered trademarks of their respective companies. All specifications are subject to change without notice. Whilst we make every effort to ensure the accuracy of the details, specifications, models, images and benefits featured in this datasheet, we cannot be held responsible for any errors and/or omissions. If you have any queries regarding Wyse products please contact your authorized regional Wyse Partner or representative for further information and assistance. Some features require support by server operating system and protocol. 03/09



Start

Models

Features

Technical

Print

**WYSE**  
I I I I

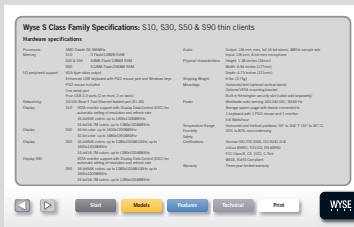
# Technical

## Wyse S Class Specifications

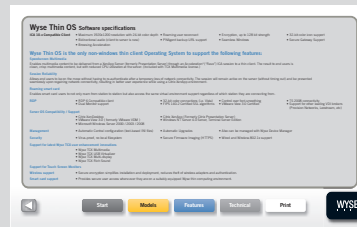
Wyse S class thin computers are available across a variety of operating systems featuring the speed, ease and administrative simplicity of Wyse Thin OS, the functionality of Microsoft Windows CE, the versatility of Microsoft Windows XPe and the robust adaptability of Wyse Linux v6.

**Learn more.** Simply click the data sheets below:

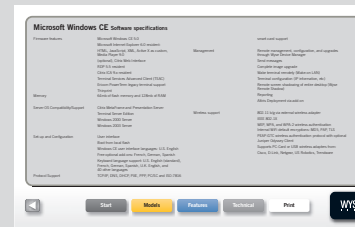
### Wyse S10, S30, S50 and S90 Thin Clients



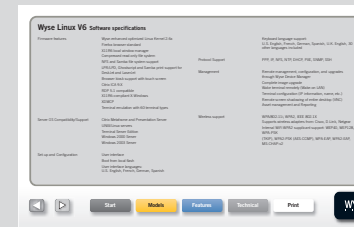
### Wyse Thin OS



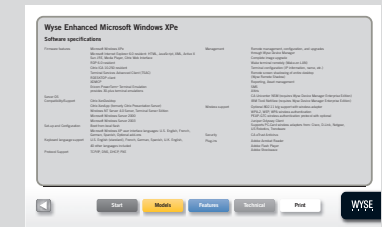
### Microsoft Windows CE



### Wyse Linux v6



### Microsoft Windows XPe



Visit: [wyse.com](http://wyse.com)



Start

Models

Features

Technical

Print

**WYSE**  
I I I I

# Wyse S Class Family Specifications: S10, S30, S50 & S90 thin clients

## Hardware specifications

<b>Processors</b>	AMD Geode GX 366MHz
<b>Memory</b>	S10 0MB Flash / 128MB RAM S30 64MB Flash / 128MB RAM S50 128MB flash / 256MB RAM S90 512MB Flash / 256MB RAM (up to 1GB Flash / 512MB RAM)
<b>I/O peripheral support</b>	VGA-type video output Enhanced USB keyboard with PS/2 mouse port and Windows keys PS/2 mouse included One serial port Four USB 2.0 ports (2 on front, 2 on back)
<b>Networking</b>	10/100 Base-T Fast Ethernet twisted pair (RJ-45)
<b>Display</b>	S10 VESA monitor support with Display Data Control (DDC) for automatic setting of resolution and refresh rate 16 bpp / 64K colors: up to 1600x1200@85Hz 24 bpp / 16.7M colors: up to 1280x1024@85Hz
<b>Display</b>	S30 16 bpp color: up to 1600x1200@85Hz 32 bpp color: up to 1680x1050@60Hz
<b>Display</b>	S50 16 bpp / 64K colors: up to 1280x1024@100Hz up to 1600x1200@90Hz 24 bpp / 16.7M colors: up to 1280x1024@85Hz
<b>Display</b>	S90 VESA monitor support with Display Data Control (DDC) for automatic setting of resolution and refresh rate 16 bpp / 64K colors: up to 1280x1024@100Hz up to 1600x1200@90Hz 24 bpp / 16.7M colors: up to 1280x1024@85Hz

<b>Audio</b>	Output: 1/8-inch mini jack, full 16 bit stereo, 48KHz sample rate Input: 1/8-inch mini jack, 8 bit microphone
<b>Physical characteristics</b>	Height: 1.38 inches (34mm) Width: 6.94 inches (177mm) Depth: 4.75 inches (121mm)
<b>Shipping Weight</b>	6 lbs. (2.7kg)
<b>Mountings</b>	Horizontal feet (optional vertical stand) Optional VESA mounting bracket Built-in Kensington security slot (cable sold separately)
<b>Power</b>	Worldwide auto-sensing 100-240 VAC, 50/60 Hz Average power usage with device connected to 1 keyboard with 1 PS/2 mouse and 1 monitor: 6.6 Watts
<b>Temperature Range</b>	Horizontal and Vertical positions: 50° to 104° F (10° to 40° C)
<b>Humidity</b>	20% to 80% noncondensing
<b>Safety certifications</b>	German EKI-ITB 2000, ISO 9241-3/-8 cULus 60950, TÜV-GS, EN 60950 FCC Class B, CE, VCCI, C-Tick WEEE, RoHS Compliant
<b>Warranty</b>	Three-year limited warranty



Start

Models

Features

Technical

Print

WYSE  
| | | |

# Wyse Thin OS Software specifications

- ICA 10.x Compatible Client**
- Maximum 1920x1200 resolution with 24 bpp color depth
  - Bidirectional audio (client to server is new)
  - Browsing Acceleration
  - Roaming user reconnect
  - PNAgent backup URL support
  - Encryption, up to 128 bit strength
  - Seamless Windows
  - 32 bpp color icon support
  - Secure Gateway Support

Wyse Thin OS is the only non-windows thin client operating system to support the following features:

## Speedscreen Multimedia

Enables multimedia content to be delivered from a Citrix XenApp Server through an Acceleration\* (“Rave”) ICA session to a thin client. The result to end users is clean, crisp multimedia content, but with reduced CPU utilization at the server (included with a Wyse TCX Multimedia license).

## Session reliability

Allows end users to be on the move without having to re-authenticate after a temporary loss of network connectivity. The session will remain active on the server (without timing out) and be presented seamlessly upon regaining network connectivity, resulting in better user experience while using a Citrix XenApp environment.

## Roaming smart card

Enables smart card users to not only roam from station to station but also access the same virtual environment support regardless of which station they are connecting from.

- RDP**
- RDP 6 Compatible client
  - Dual Monitor support
  - 32 bpp color connections (i.e. Vista)
  - FIPS 140-2 Certified SSL algorithms
  - Control over font-smoothing

## Server OS Infrastructure Support

- Citrix XenDesktop
- Citrix XenApp / Citrix Presentation Server
- VMware View
- Microsoft Windows Terminal Server 2003 / 2008
- Support for other leading VDI brokers (Quest Software, Leostream, etc)

- Management**
- Automatic Central configuration (text-based INI files)
  - Automatic Upgrades
  - Also can be managed with Wyse Device Manager

- Security**
- Virus-proof, no local file system
  - Secure Firmware Imaging (HTTPS)
  - Wired and Wireless 802.1x support

## Support for latest Wyse TCX user enhancement software innovations

- Wyse TCX USB Virtualizer

## Support for Touch Screen Monitors

- Wireless support**
- Secure encryption simplifies installation and deployment.
- Smart card support**
- Provides secure user access wherever they are in a suitably equipped Wyse thin computing environment.



Start

Models

Features

Technical

Print

WYSE  
| | | |

# Microsoft Windows CE Software specifications

## Firmware features

Microsoft Windows CE 5.0  
Microsoft Internet Explorer 6.0 resident:  
HTML, JavaScript, XML, Active X as custom,  
Media Player 9.0  
Citrix Web Interface  
RDP 5.5 resident  
Citrix ICA 9.x resident  
Terminal Services Advanced Client (TSAC)  
Ericom PowerTerm legacy terminal support  
Thinprint

## Memory

64mb of flash memory and 128mb of RAM

## Server OS Infrastructure Support

Citrix XenApp / Citrix Presentation Server  
Citrix XenDesktop  
VMware View  
Microsoft Windows Terminal Server 2003 / 2008

## Set-up and Configuration

User interface  
Boot from local flash  
Microsoft Windows CE user interface languages:  
U.S. English  
Free optional add-ons: French, German, Spanish  
Keyboard language support: U.S. English (standard),  
French, German, Spanish, U.K. English, and  
40 other languages

## Protocol Support

TCP/IP, DNS, DHCP, PXE, PPP, PC/SC and ISO-7816  
smart-card support

## Management

Remote management, configuration and upgrades  
through Wyse Device Manager  
Send messages  
Complete image upgrade  
Wake terminal remotely (Wake-on LAN)  
Terminal configuration (IP information, etc)  
Remote screen shadowing of entire desktop  
(Wyse Remote Shadow)  
Reporting  
Altiris Deployment via add-on

## Wireless support

802.11 b/g support with external wireless adapter  
IEEE 802.1X  
WEP, WPA, and WPA-2 wireless authentication  
Internal WiFi default encryptions: MD5, PAP, TLS  
PEAP-GTC wireless authentication protocol with optional  
Juniper Odyssey Client  
Supports PC-Card or USB wireless adapters from:  
Cisco, D-Link, Netgear, US Robotics, Trendware



Start

Models

Features

Technical

Print

WYSE  
I T I

# Wyse Linux v6 Software specifications

## Firmware features

Wyse-enhanced optimized Linux Kernel 2.6x  
Firefox browser standard  
X11R6 local window manager  
Compressed read-only file system  
NFS and Samba file system support  
LPR/LPD, Ghostscript and Samba print support for DeskJet and LaserJet  
Browser kiosk support with touch screen  
Citrix ICA 10.X  
RDP 5.1 compatible  
X11R6-compliant X-Windows  
XDMCP  
Terminal emulation with 60 terminal types

## Server OS Infrastructure Support

Citrix XenApp / Citrix Presentation Server  
Citrix XenDesktop  
VMware View  
Microsoft Windows Terminal Server 2003 & 2008  
UNIX & Linux servers

## Set-up and Configuration

User interface  
Boot from local flash  
User interface languages:  
U.S. English, French, German, Spanish

## Keyboard language support

U.S. English, French, German, Spanish, U.K. English, 30 other languages included

## Protocol Support

PPP, IP, NFS, NTP, DHCP, PXE, SNMP, SSH

## Management

Remote management, configuration, and upgrades through Wyse Device Manager  
Complete image upgrade  
Wake terminal remotely (Wake-on LAN)  
Terminal configuration (IP information, name, etc.)  
Remote screen shadowing of entire desktop (VNC)  
Asset management and Reporting

## Wireless support

WPA/802.11, WPA2, IEEE 802.1X  
Supports wireless adapters from: Cisco, D-Link, Netgear  
Internal WiFi WPA2 supplicant support: WEP40, WEP128, WPA-PSK  
(TKIP), WPA2-PSK (AES-CCMP), WPA-EAP, WPA2-EAP, MS-CHAP-v2



Start

Models

Features

Technical

Print

WYSE  
I I I I

# Microsoft Windows XPe Software specifications

## Firmware features

Microsoft Windows XPe  
Microsoft Internet Explorer 6.0 resident: HTML, JavaScript, XML,  
Active X Sun JRE, Media Player, Citrix Web Interface  
RDP 6.0 resident  
Citrix ICA 10.250 resident  
Terminal Services Advanced Client (TSAC)  
Ericom PowerTerm<sup>®</sup> Terminal Emulation  
provides 30-plus terminal emulations  
Citrix XenDesktop

## Server OS Infrastructure Support

Citrix XenApp / Citrix Presentation Server  
Citrix XenDesktop  
VMware View  
Microsoft Windows Terminal Server 2003 & 2008

## Set-up and Configuration

Boot from local flash  
Microsoft Windows XP user interface languages: U.S. English,  
French, German, Spanish, Optional add-ons

## Keyboard language support

U.S. English (standard), French, German, Spanish, U.K. English,  
40 other languages included

## Protocol Support

TCP/IP, DNS, DHCP, PXE

## Management

Remote management, configuration, and upgrades  
through Wyse Device Manager  
Complete image upgrade  
Wake terminal remotely (Wake-on LAN)  
Terminal configuration (IP information, name, etc.)  
Remote screen shadowing of entire desktop  
(Wyse Remote Shadow)  
Reporting, Asset management  
SMS  
Altiris  
CA Unicenter NSM (requires Wyse Device Manager  
Enterprise Edition)  
IBM Tivoli NetView (requires Wyse Device Manager  
Enterprise Edition)

## Wireless support

802.11 b/g support with external wireless adapter  
WPA-2, WEP, WPA wireless authentication  
PEAP-GTC wireless authentication protocol with optional  
Juniper Odyssey Client  
Supports PC-Card wireless adapters from: Cisco, D-Link, Netgear,  
US Robotics, Trendware

## Plug-ins

Adobe Flash Player  
Adobe Shockwave



Start

Models

Features

Technical

Print

WYSE  
I I I I

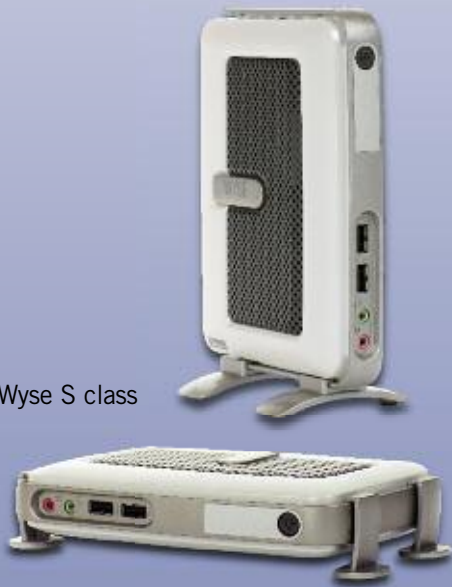
**WYSE**

# Wyse S Class thin computers

Small size. Fast mover.

## Summary Data

Wyse S class



## Wyse S class thin computers

### Fast start-up. High performance.

Powered by their AMD Geode GX 366 MHZ processors these stateless, diskless devices boot-up in seconds, provide secure user login to corporate networks and, with no moving parts, are capable of delivering a long service life-span of between 5-7 years. Wyse S class thin computers are optimized for Microsoft Terminal Server, Citrix XenApp, Citrix XenDesktop, and VMware View environments.

### Saving space.

Wyse S class thin computers are big on features and benefits without taking over a users' valuable desktop space and environment. Wyse S class thin computers are supplied as standard with feet for horizontal use. Optional feet enable Wyse S class thin computers to be used vertically.

An optional VESA mount bracket enables Wyse S class thin computers to be mounted on the back of a monitor (this requires the four industry standard mounting points to be free). The same bracket can be used for wall mounting, or in a secure or ruggedized cabinet if required.

### Saving energy.

Small on size also means small on energy consumption, as each Wyse S class draws just 6.6 watts of power and creates very little heat. As a result each Wyse S class contributes to cooler working environments, greatly reduced carbon footprints and huge savings in energy costs when compared to equivalent PC desktops.

### Choice of operating systems.

Wyse S class thin computers are available across a variety of operating systems featuring the speed, ease and administrative simplicity of Wyse Thin OS, the functionality of Microsoft Windows CE, the versatility of Microsoft Windows XPe and the robust adaptability of Wyse Linux v6.

Call Wyse: 1-800-GET-WYSE [www.wyse.com](http://www.wyse.com)

## Features

### Performance

AMD Geode GX 366 MHZ processors.  
Optimized for virtualized environments.

### Connectivity

10/100 Base-T Ethernet port, four external USB ports (2 front, 2 back), one serial port, one VGA-type video output, audio in and out via 1/8 inch min jack sockets.

### Mounting options

Horizontal standing feet supplied as standard. Optional feet for vertical standing. Can be mounted to walls and backs of monitors.

### Green

Draws just 6.6 watts of power when connected to one keyboard, PS/2 mouse and monitor.

### Management

Features Wyse Device Manager (workgroup edition).

### Virtualization

Connect peripherals to Wyse S class virtualized desktops with Wyse TCX USB virtualizer.

### Wyse Thin OS

Fast booting, easy management, secure and with Smart Card support.

### Wyse Linux V6

Powerful Linux-based operating system optimized for thin computing.

### Microsoft Windows CE

Ideal for departments and organizations that need simple support for Citrix ICA and Microsoft RDP.

### Microsoft Windows XPe

Deploy fully functional desktop computers, with better manageability with the ability to create bespoke system images.

# Wyse S class thin computers Hardware specifications

## S10, S30, S50 & S90 thin computers

Processors	AMD Geode GX 366MHz
Memory	S10 0 Flash/128MB RAM S30 64MB Flash/128MB RAM S50 128MB Flash/256MB RAM S90 512MB Flash/256MB RAM (up to 1GB / 512MB)
I/O peripheral support	VGA-type video output Enhanced USB keyboard with PS/2 mouse port and Windows keys PS/2 mouse included One serial port Four USB 2.0 ports (2 on front, 2 on back)
Networking	10/100 Base-T Fast Ethernet twisted pair (RJ-45)
Display	S10 VESA monitor support with Display Data Control (DDC) for automatic setting of resolution and refresh rate 16 bpp / 64K colors: up to 1600x1200@85Hz 24 bpp / 16.7M colors: up to 1280x1024@85Hz
Display	S30 16 bpp color: up to 1600x1200@85Hz 32 bpp color: up to 1680x1050@60Hz
Display	S50 16 bpp / 64K colors: up to 1280x1024@100Hz up to 1600x1200@90Hz 24 bpp / 16.7M colors: up to 1280x1024@85Hz
Display	S90 VESA monitor support with Display Data Control (DDC) for automatic setting of resolution and refresh rate 16 bpp / 64K colors: up to 1280x1024@100Hz up to 1600x1200@90Hz 24 bpp / 16.7M colors: up to 1280x1024@85Hz
Audio	Output: 1/8-inch mini jack, full 16 bit stereo, 48KHz sample rate Input: 1/8-inch mini jack, 8 bit microphone
Physical characteristics	Height: 1.38 inches (34mm) Width: 6.94 inches (177mm) Depth: 4.75 inches (121mm) Shipping Weight 6 lbs. (2.7kg)
Mountings	Horizontal feet (optional vertical stand) Optional VESA mounting bracket Built-in Kensington security slot (cable sold separately)
Power	Worldwide auto-sensing 100-240 VAC, 50/60 Hz Average power usage with device connected to 1 keyboard with 1 PS/2 mouse and 1 monitor: 6.6 Watts
Temperature Range	Horizontal and Vertical positions: 50° to 104° F (10° to 40° C) Humidity 20% to 80% noncondensing
Safety certifications	German EKI-ITB 2000, ISO 9241-3/-8 cULus 60950, TÜV-GS, EN 60950 FCC Class B, CE, VCCI, C-Tick WEEE, RoHS Compliant
Warranty	Three-year limited warranty

**Wyse Technology Inc.**  
3471 North First Street  
San Jose, CA 95134-1801

**Visit our website at:**  
<http://www.wyse.com>  
Or send email to:  
[sales@wyse.com](mailto:sales@wyse.com)

**Wyse Sales**  
800 GET WYSE  
(800 438 9973)

**Wyse Customer  
Service Center:**  
800 800 WYSE  
(800 800 9973)

**WYSE**  
| | | |